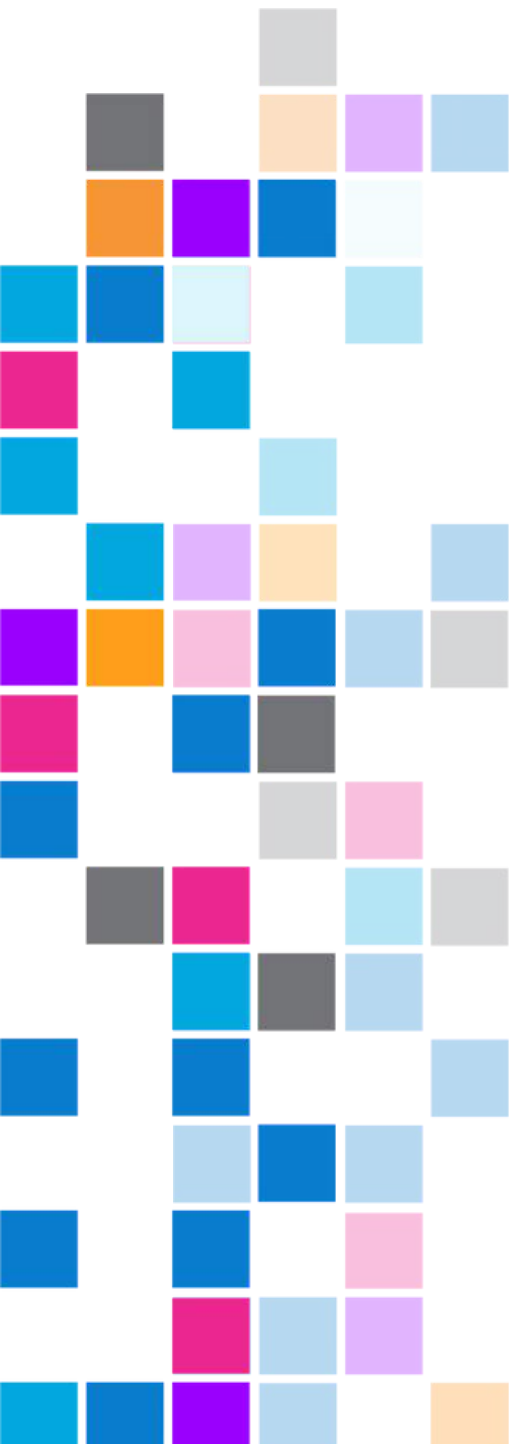


Co-funded by  
the European Union



**Friend CCI**  
Create - Connect - Innovate



**INFO DAY CALL FOR PROJECTS**



## ABOUT FRIEND CCI

The FRIEND CCI project offers financial support to SMEs in the form of grants, directed to the development and implementation of cross-sectoral projects aimed to bring innovation both at the level of products and at the level of processes/ technologies, with a specific eye on the needs linked to the twin transition.

**VENETIAN CLUSTER**



**FRANCE CLUSTERS**



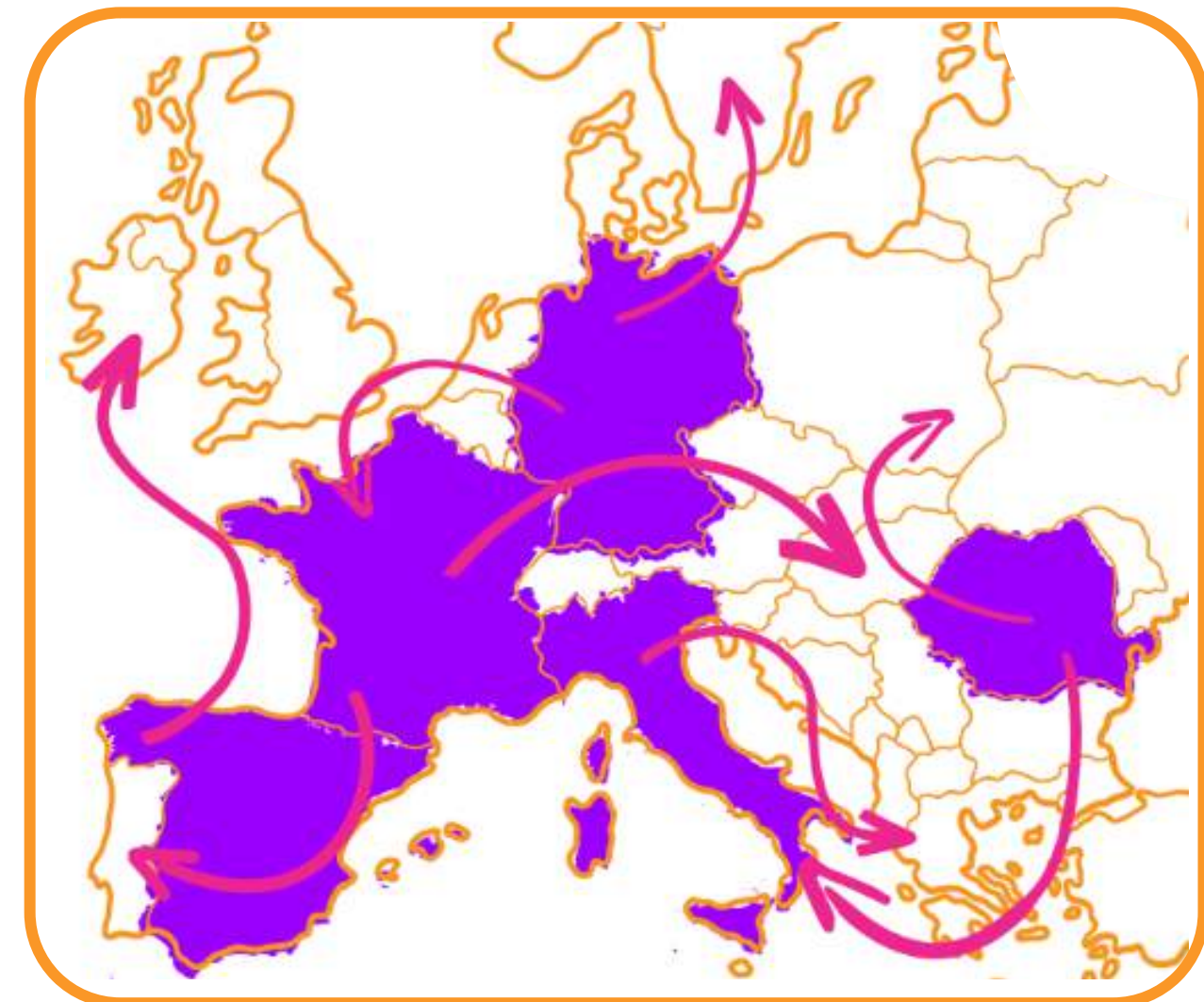
**CLUSTER IDIA**



**ITALCAM**

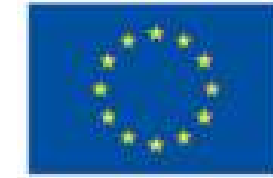


**OPEN HUB CREATIVE CLUSTER**



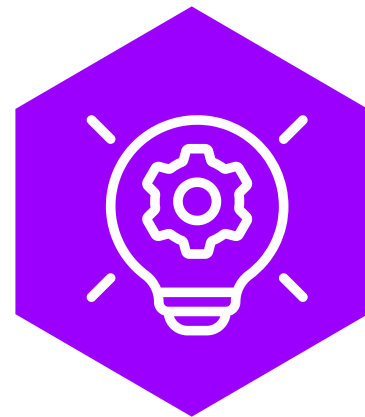


# FRIEND CCI EUROCLUSTER IS ONE OF THE 30 EUROCLUSTERS FUNDED UNDER THE COSME SMP PROGRAMME

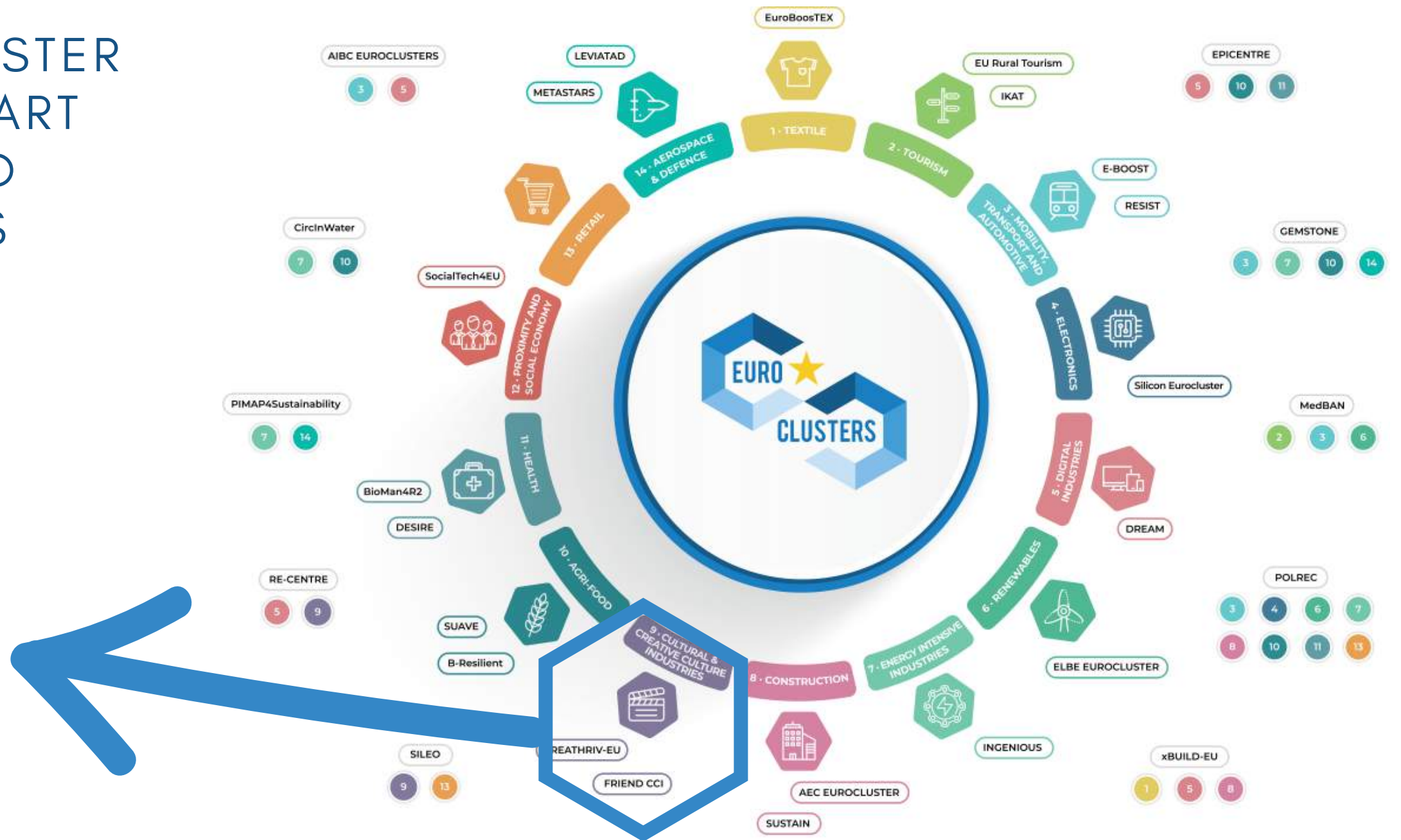


Co-funded by the European Union

FRIEND CCI EUROCLUSTER IS RECOGNIZED AS PART OF THE CREATIVE AND CULTURAL INDUSTRIES ECOSYSTEM



## Creative & Cultural Industries



<https://clustercollaboration.eu/euroclusters>

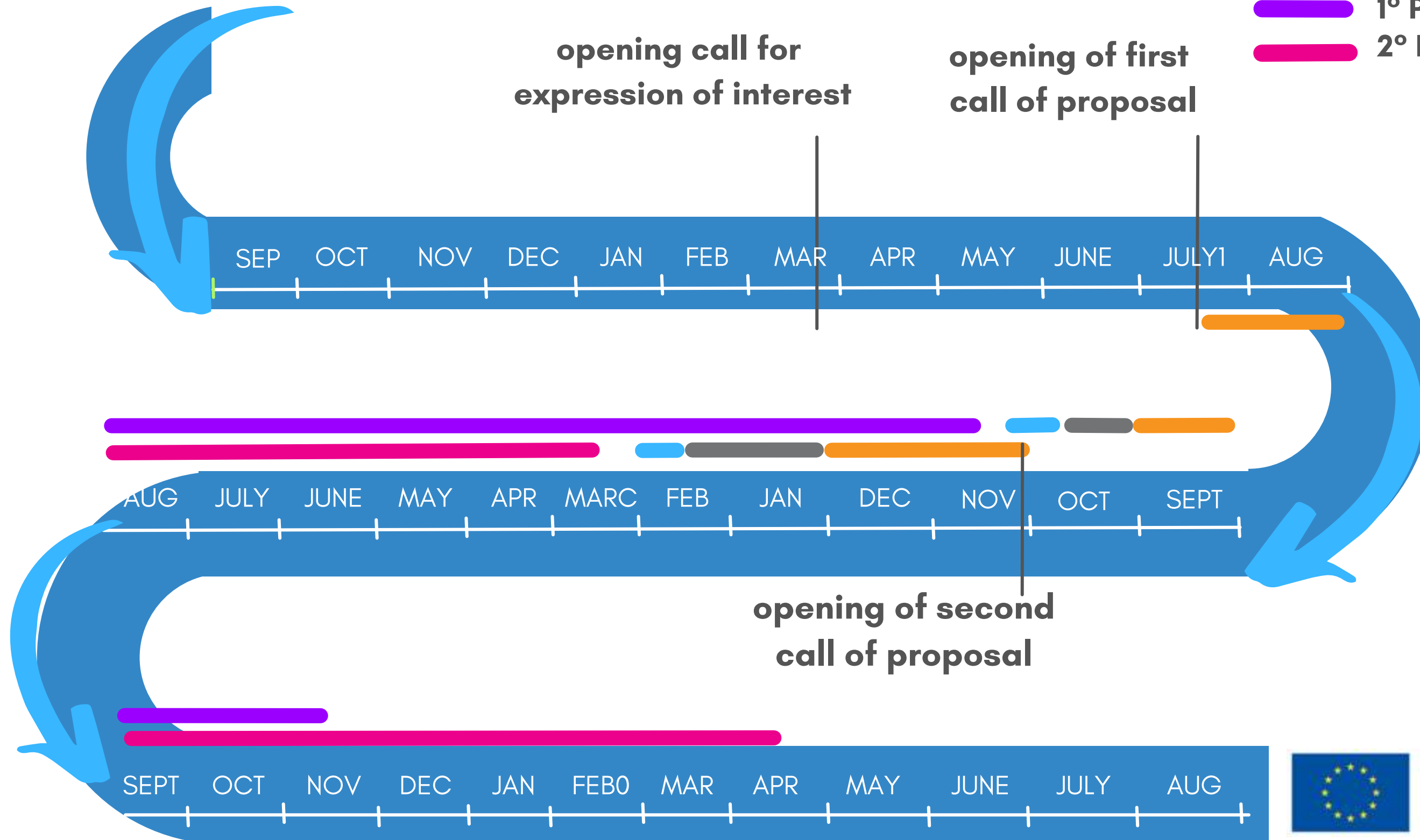


# FRIEND CCI FUNDING SCHEME: 2 WINDOWS TO APPLY TO CALL FOR SME



## Legend:

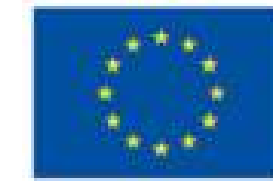
- APPLICATION PERIOD
- EVALUATION PERIOD:
- WINNER NOTIFICATION:
- 1° PROJECT PERIOD:
- 2° PROJECT PERIOD:



Co-funded by  
the European Union



# AVAILABLE BUDGET FROM FRIEND CCI EUROCLUSTER

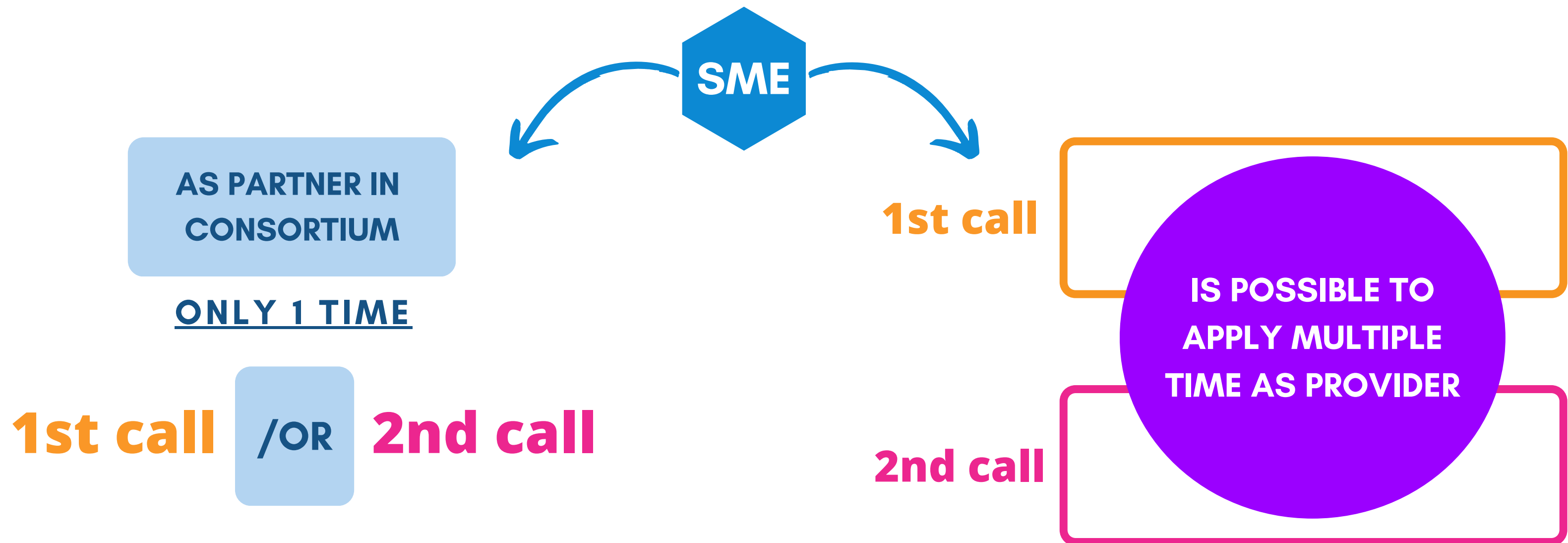


Co-funded by  
the European Union



**SME PARTICIPATION IN TWO CALLS FOR PROJECTS FROM FRIEND CCI EUROCLUSTERS:  
MAX 1 TIMES AS PARTNER. THUS IS POSSIBLE TO PARTECIPATE MULTIPLE TIMES AS  
PROVIDER WHITHOUT EXCEEDING 60K OF TOTAL FUNDS FROM FRIEND CCI EUROCLUSTER.**

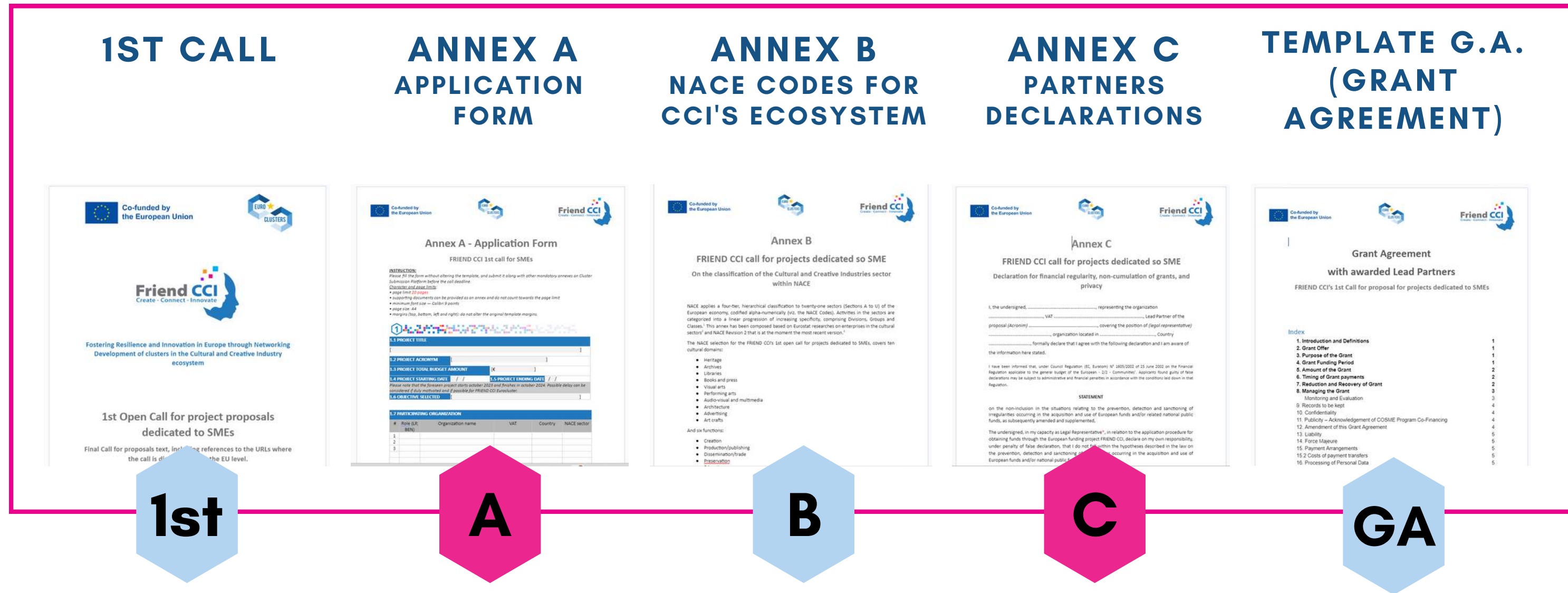
HERE POSSIBLE CASE SCENARIO:



**ALL SME SHOULD NOT EXCEED THE LIMIT OF 60K FROM FRIEND CCI EUROCLUSTER**

# WHERE TO FIND THE FRIEND CCI 1ST CALL FOR PROJECT PROPOSALS DEDICATED TO SME

**DOWNLOAD THE NECESSARY DOCUMENT FROM THE CLUSTER SUBMISSION PLATFORM (CSP):**  
[HTTPS://CLUSTERSUBMISSIONPLATFORM.EU/EUROCLUSTER\\_POST/FRIEND-CCI-SMES-OPEN-CALL/](https://clustersubmissionplatform.eu/eurocluster_post/friend-cci-smes-open-call/)

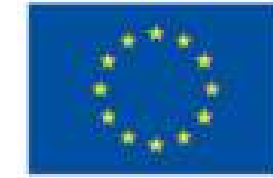


ANNEX IN MAGENTA COLOUR (A, C) NEEDS TO BE SUBMITTED DURING APPLICATION PHASE.

**FIND IT ALSO ON ECCP:** [HTTPS://CLUSTERCOLLABORATION.EU/CONTENT/FRIEND-CCI-OPEN-CALL-PROJECT-PROPOSALS-DEDICATED-SMES](https://clustercollaboration.eu/content/friend-cci-open-call-project-proposals-dedicated-smes)

**FIND IT ALSO ON FUNDING&TENDER:** [HTTPS://EC.EUROPA.EU/INFO/FUNDING-TENDERS/OPPORTUNITIES/PORTAL/SCREEN/MYAREA/PROJECTS/CASCADE-FUNDING-DETAILS/DETAILS/3791/43252476/101074465](https://ec.europa.eu/info/funding-tenders/opportunities/portal/screen/myarea/projects/cascade-funding-details/details/3791/43252476/101074465)

## ELEGIBILITY CRITERIA



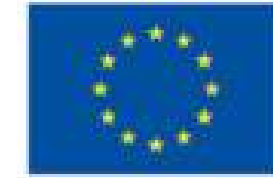
In order to be eligible, the applicants must:

- be legal entities;
- be established in one of the eligible countries, i.e.:
  - EU Member States (including overseas countries and territories (OCTs))
  - non-EU countries:
    - listed EEA countries and countries associated to the COSME part of the Single Market Programme.
- **Only SMEs are eligible to apply for the FRIEND CCI open call, by applying as a consortium of SMEs.**

**Definitions:** For the purpose of this call, SMEs have to be understood as **Small and Medium-sized Enterprises**. According to the European Commission's Recommendation (2003/361/EC), companies shall respect these requirements (see below table).



## CONSORTIUM COMPOSITION TO APPLY:



Co-funded by  
the European Union



*N. OF PARTNERS:*

**MIN. 2 SME , MAX 5 SME**

*N. OF PARTNERS FROM CULTURE ECOSYSTEM:*

**AT LEAST ONE** (SEE NACE CODE ANNEX B)

*N. OF PARTNERS FROM OTHER ECOSYSTEM:*

**AT LEAST ONE**

*LEAD PARTNER FROM:*



**MANDATORY**

*PARTNERS FROM MORE THAN 1 COUNTRY:*

FROM 2 COUNTRY TO MORE

*PARTNERS FROM EU-13:*

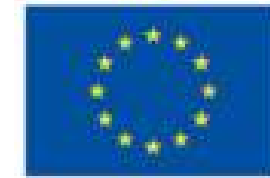
IF INCLUDE SPECIFIC COUNTRIES



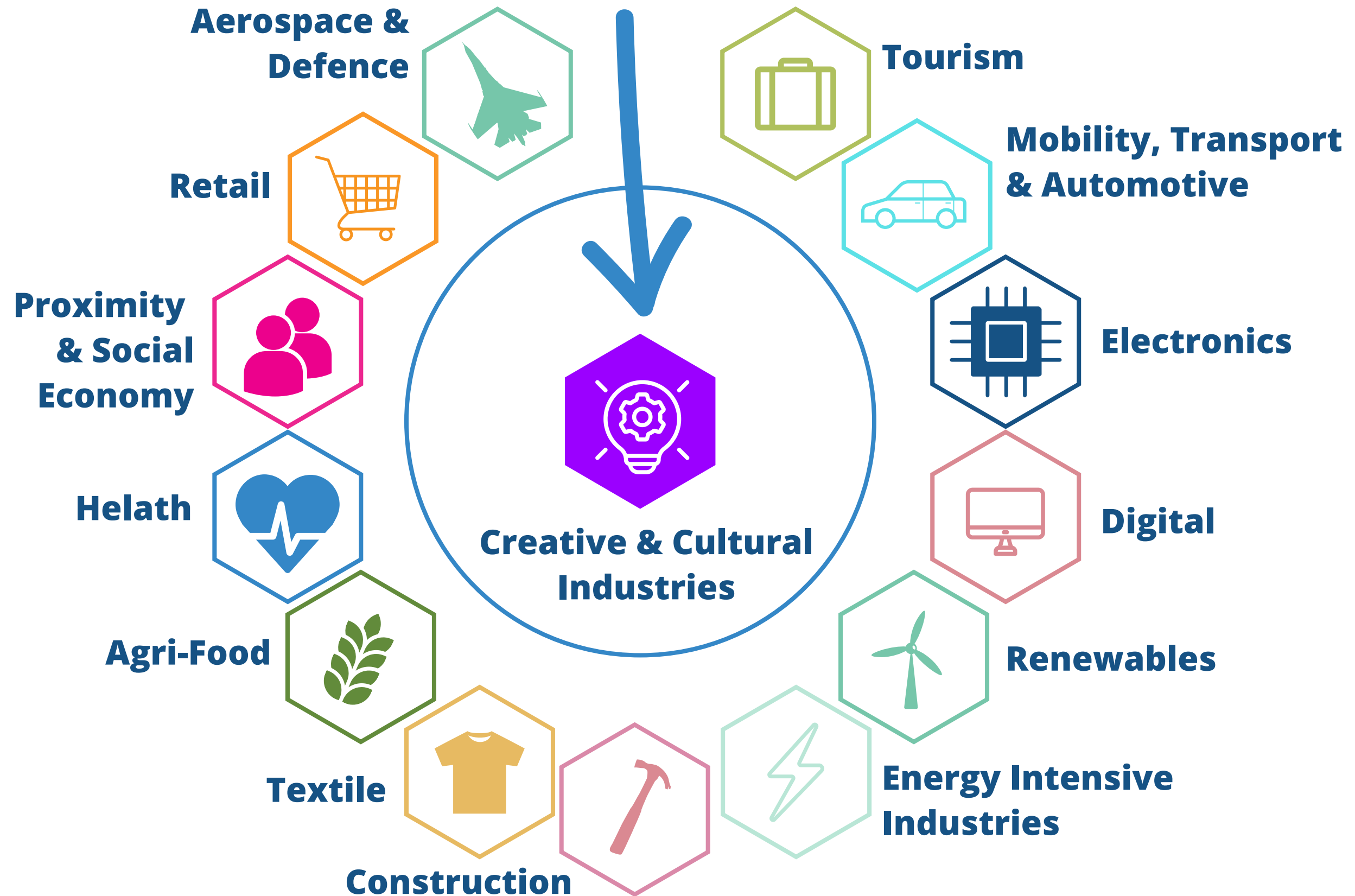
**OPTIONAL BUT WELL EVALUATED**



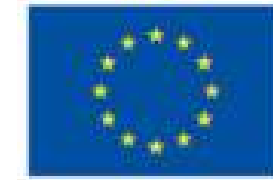
# CONSORTIUM COMPOSITION: CCI'S INTERLINKAGES WITH OTHER SECTORS



Co-funded by  
the European Union

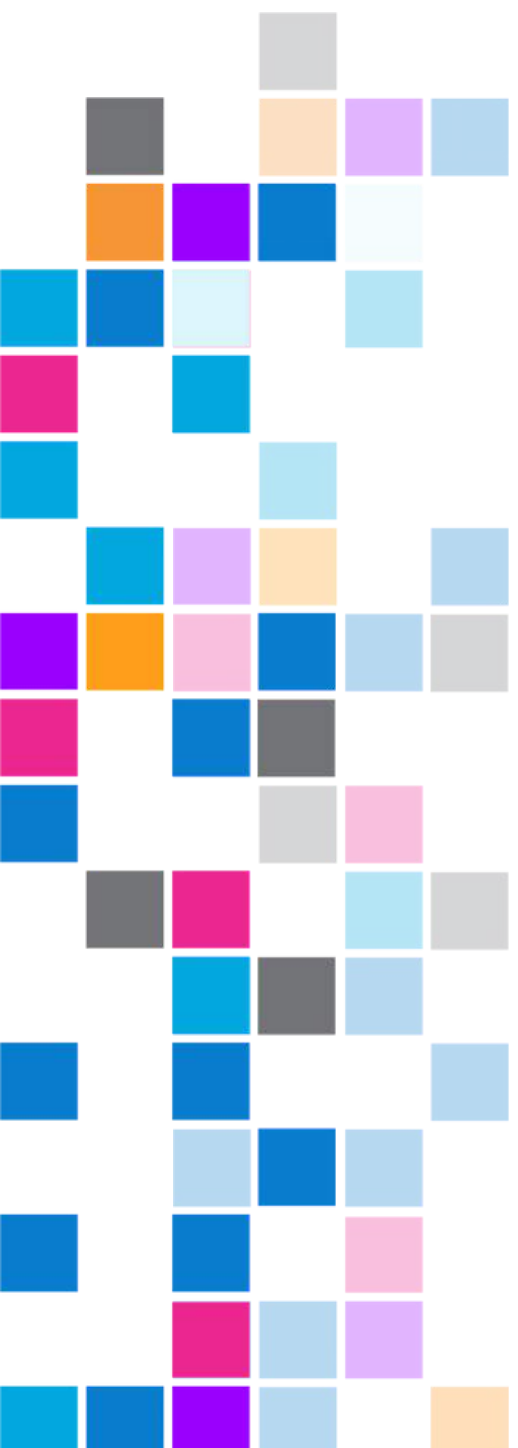


# CONSORTIUM COMPOSITION: EXAMPLES



Co-funded by  
the European Union

TO FACILITATE APPLICANTS IMAGINING POSSIBLE CONSORTIUM SCENARIO, HERE SOME ELEGIBLE EXAMPLES, USING PRECEDENT SLIDE ECOSYSTEMS LOGOS:



**1# LEAD PARTNER**  

**2# PARTNER** 

**3# PARTNER** 

**1# LEAD PARTNER**  

**2# PARTNER**  

**1# LEAD PARTNER**  

**2# PARTNER** 

**3# PARTNER** 

**4# PARTNER** 

**1# LEAD PARTNER**  

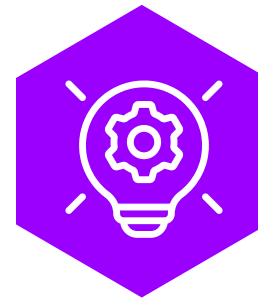
**2# PARTNER**  

**3# PARTNER** 

**4# PARTNER**  

**5# PARTNER** 

## MANDATORY OBJECTIVES: CHOOSE AT LEAST ONE



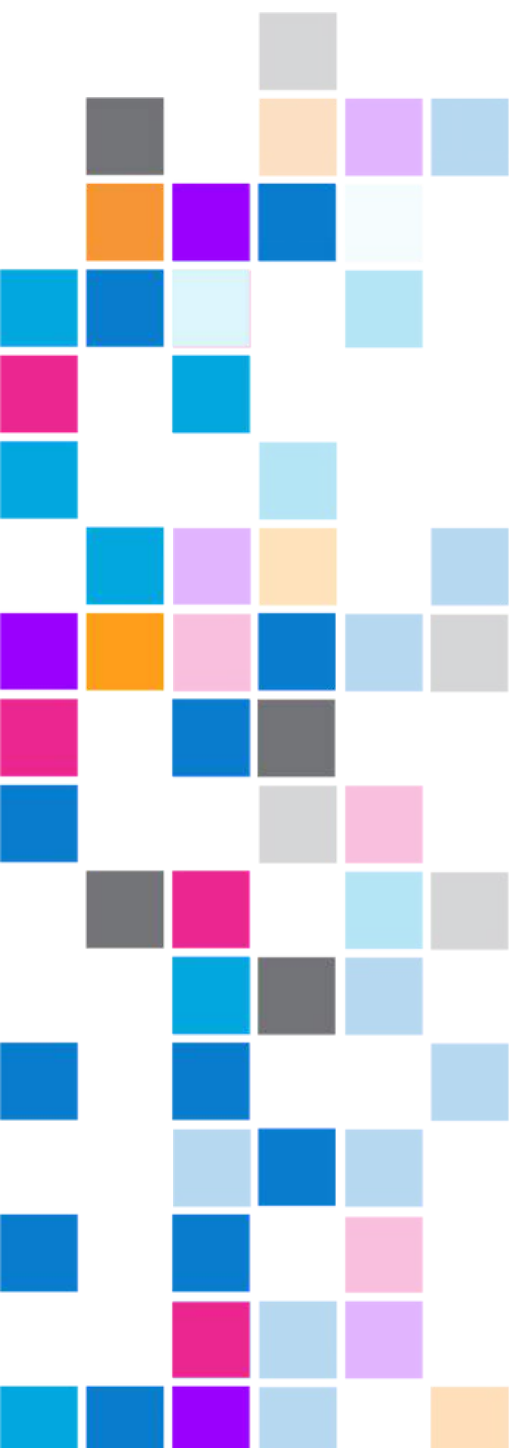
### 1) PRODUCT INNOVATIONS

Applicants should submit proposals that center in innovation in their value chains.

They should undertake innovation activities i.e. all developmental, financial and commercial activities undertaken by a firm that are intended to result in an innovation for the firm.

### 2) ADOPT PROCESSES AND TECHNOLOGIES TO REINFORCE TRANSFORMATION INTO A GREENER AND MORE DIGITAL ECONOMY.

The aim is to adopt processes and technologies that improve the value chains' efficiency in the use of resources, open markets for green technologies and services and uptake of digital solutions.



## 2 MANDATORY ACTIVITIES: TO DO BOTH

1) AT LEAST ONE UPSKILLING AND/OR RESKILLING ACTIVITY FOR SME EMPLOYEES (ORGANIZE **TRAINING**)

2) AT LEAST ONE ACTIVITY **TO GO INTERNATIONAL**, TO BOOST ACCESS TO GLOBAL SUPPLY AND VALUE CHAINS, BASED ON THEIR LEVEL OF READINESS.

MANDATORY ACTIVITY CAN BE COVERED BY:

### **+ 1 MANDATORY SERVICE FROM EXTERNAL PROVIDER**

MANDATORY REQUIREMENT TO INCLUDE IN THEIR PROJECT BUDGET **AT LEAST ONE SERVICE FROM AN EXTERNAL SERVICE PROVIDER.**

THE SERVICE SHOULD FOCUS ON ONE OF THE FOLLOWING TOPICS:

- DIGITAL TRANSITION,
- GREEN TRANSITION,
- INTERNATIONALIZATION.

THE SERVICES CAN BE PART OF AN ACTIVITY TO COVER ACTIONS UNDER MANDATORY ACTIVITIES.

## FINANCIAL SUPPORT FROM FRIEND CCI'S 1ST CALL



### TYPE OF SUPPORT: LUMP SUMS

**MINIMUM**  
**20.000,00 EUR**

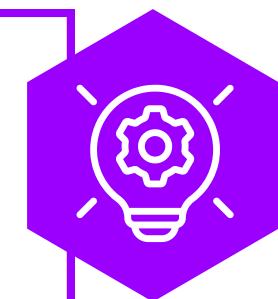
**MAXIMUM**  
**50.000,00 EUR**

**co-funded at 100%**



Co-funded by  
the European Union

**IMPORTANT: AT LEAST 20% OF THE BUDGET OF EACH PROJECT SHOULD BE DEDICATED TO THE SMES FROM THE CCI SECTOR (SEE ANNEX B FOR CCI'S NACE CODES).**



EACH APPLICANT SHOULD DETAILS HOW THE GRANT WILL BE SPENT USING THE TABLE BADGET OF THE APPLICATION FORM. THE CALL DESCRIBE THE ELEGIBLE BUDGET CATEGORY.



# CRITERIA FOR EVALUATION

## MAIN CRITERIA:

1. Relevance
2. Quality
3. Capacity
4. Impact

## ADDITIONAL CRITERIA:

- 5, 6, 7, 8, 9

Proposals that pass the minimum pass score for each criterion will be considered for funding. Funding will be awarded on the basis of a shortlist starting from the highest score down, within the limits of the available call budget.

Criteria	Min. pass score	Max . score
<b>1) Relevance:</b> Excellence aspects of the proposal for the CCI sector	12	30
<i>Application Form, section 2: PROJECT SHORT SUMMARY;</i>	6	10
<i>Application Form, section 4: PROJECT OBJECTIVES AND BACKGROUND</i>	6	10
<i>Application Form, section 5: CONCEPT AND METHODOLOGY;</i>	6	10
<b>2) Quality:</b> Project design and implementation	12	20
<i>Application Form, section 8: WORK PLAN AND TIMELINE;</i>	6	10
<i>Application Form, section 10: ADDITIONAL MATERIAL;</i>	6	10
<b>3) Capacity:</b> Partnership and sound management	12	20
<i>Application Form, section 9: BUDGET ALLOCATION PER BENEFICIARIES;</i>	6	10
<i>Application Form, section 7: PROJECT MANAGEMENT AND VISIBILITY;</i>	6	10
<b>4) Impact:</b> Ambition of the proposal and innovation level	12	15
<i>Application Form, section 3: PARTNERS INFORMATION - CONSORTIUM COMPOSITION;</i>	6	10
<i>Application Form, section 6: IMPACTS AND INNOVATION LEVEL;</i>	6	10
5) The consortium includes as partner SMEs from at least 2 different eligible countries	0	2
6) Consortium includes SMEs coming from EU eligible countries different from Italy, France, Spain, Germany, Romania.	0	2
7) Consortium includes 3 SMEs	0	1
8) Consortium includes 4 SMEs	0	2
9) Consortium includes 5 SMEs	0	3
<b>Overall scores</b>	<b>48</b>	<b>100</b>



ALL PROPOSALS MUST BE SUBMITTED DIRECTLY ONLINE VIA  
THE CLUSTER SUBMISSION PLATFORM (CSP)  
**[HTTPS://CLUSTERSUBMISSIONPLATFORM.EU/EUROCLUSTER\\_POST/FRIEND-CCI-SMES-OPEN-CALL/](https://clustersubmissionplatform.eu/euroclusters_post/friend-cci-smes-open-call/)**

## SUBMISSION IS A 2-PHASE PROCESS:

- a) Create a user account and register your organization on the Cluster Submission Platform (CSP);
- b) submit the proposal by accessing the Cluster Submission Platform (CSP), fill and upload the required documents under the call for proposal page.

## Clusters Submission Platform

Welcome to the Cluster Submission Platform webpage!

Here you will learn about funding calls and other activities developed by several Euroclusters, and have the opportunity to participate in them, when active.

If you want to learn more about Euroclusters, visit the [main Euroclusters webpage](#) on the [European Cluster Collaboration Platform](#).

[Explore our funding calls](#)



### BEHIND THE PROJECT

## Our partners

Clusters Submission Platform is managed by a strong consortium of European Euroclusters that help SMEs to innovate and grow.





## HOW TO APPLY



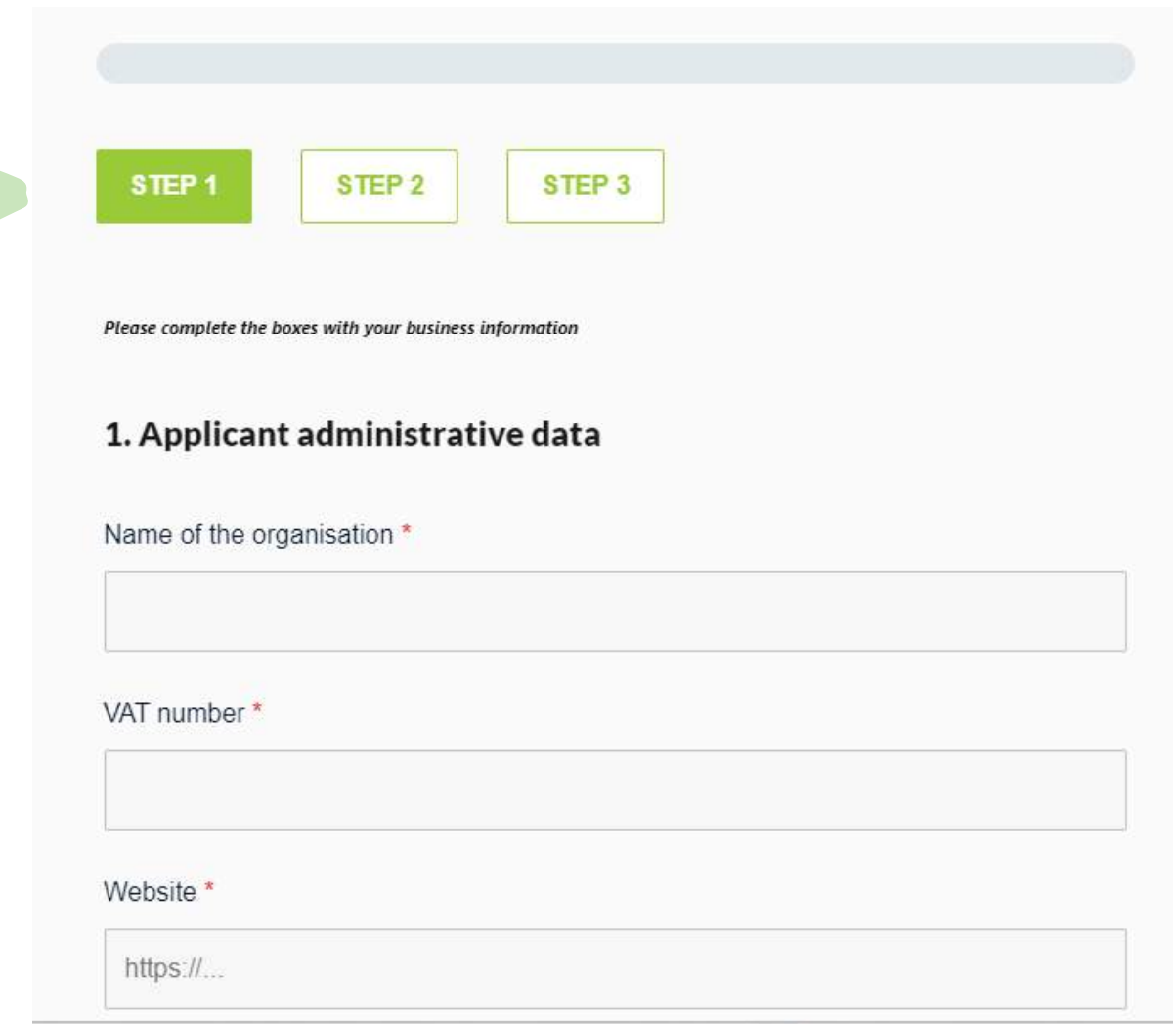
Submit your proposal on Cluster Submission Platform by filling required fields in 3 steps submission.



### LIST OF MANDATORY ANNEXES:

- Application form of the partnership Annex A;
- Copy of ID of the legal representative of each applying SME;
- CV (in English) of project manager of the Lead Partner;
- Document of VAT registration for each applying SME, and evidence of their NACE code;
- Signed and scanned Annex C of each applying SME.

## APPLY TO FRIEND CCI CALL FOR PROJECT PROPOSAL



STEP 1    STEP 2    STEP 3

*Please complete the boxes with your business information*

**1. Applicant administrative data**

Name of the organisation \*

VAT number \*

Website \*

YOU CAN DOWNLOAD ALL NECESSARY ANNEXES FROM THE CLUSTER SUBMISSION PLATFORM (CSP):  
[HTTPS://CLUSTERSUBMISSIONPLATFORM.EU/EUROCLUSTER\\_POST/FRIEND-CCI-SMES-OPEN-CALL/](https://clustersubmissionplatform.eu/eurocluster_post/friend-cci-smes-open-call/)

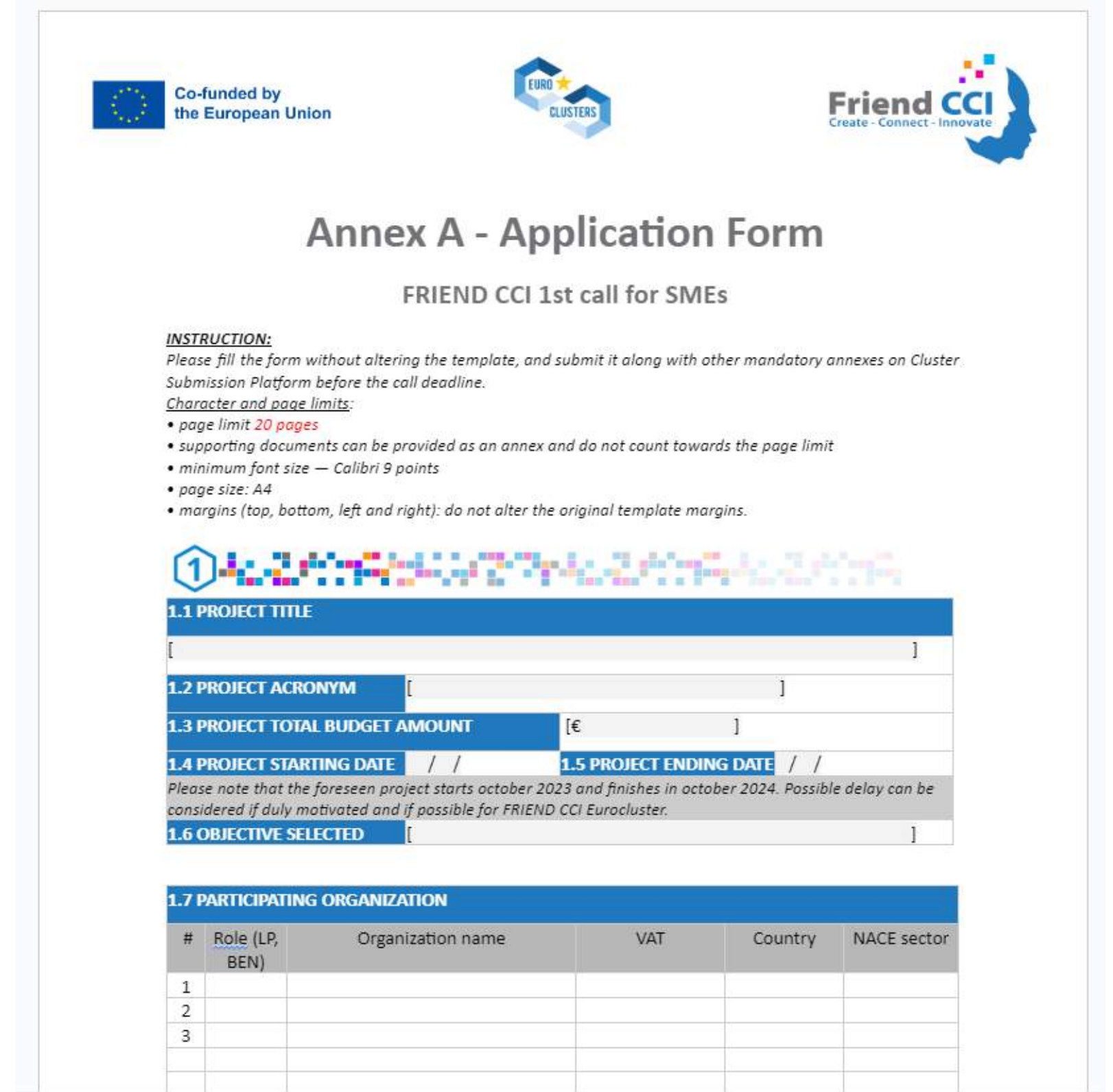
# HOW TO APPLY: FOCUS ON PROVIDED ANNEXES

## 1. APPLICATION FORM OF THE PARTNERSHIP OF SME - ANNEX A

- Download it in word format;
- Fill it digitally;
- Transform it in PDF and submit it as annex;

Application form is composed of 10 chapters:

1. Project Information;
2. Project short summary;
3. Partners information;
4. Project objective and background;
5. Concept and methodology;
6. Impacts and innovation level;
7. Project management and visibility;
8. Workplan and timeline;
9. Budget allocation per beneficiaries;
10. Additional material.

Co-funded by the European Union

EURO CLUSTERS

Friend CCI  
Create - Connect - Innovate

### Annex A - Application Form

FRIEND CCI 1st call for SMEs

**INSTRUCTION:**  
Please fill the form without altering the template, and submit it along with other mandatory annexes on Cluster Submission Platform before the call deadline.

**Character and page limits:**

- page limit 20 pages
- supporting documents can be provided as an annex and do not count towards the page limit
- minimum font size — Calibri 9 points
- page size: A4
- margins (top, bottom, left and right): do not alter the original template margins.

**1 PROJECT TITLE**  
[ ]

**1.2 PROJECT ACRONYM** [ ]

**1.3 PROJECT TOTAL BUDGET AMOUNT** [€ ]

**1.4 PROJECT STARTING DATE** / / **1.5 PROJECT ENDING DATE** / /

Please note that the foreseen project starts october 2023 and finishes in october 2024. Possible delay can be considered if duly motivated and if possible for FRIEND CCI Eurocluster.

**1.6 OBJECTIVE SELECTED** [ ]

**1.7 PARTICIPATING ORGANIZATION**

#	Role (LP, BEN)	Organization name	VAT	Country	NACE sector
1					
2					
3					

# HOW TO APPLY: FOCUS ON PROVIDED ANNEXES

## 1. APPLICATION FORM OF THE PARTNERSHIP OF SME - ANNEX A



### BUDGET TABLE:

Budget category:

- A) Personnel costs;
- B) Subcontracting;
- C) Other costs;
  - C1) Consumables;
  - C2) Equipment;
  - C3) Travels;
  - C4) Other expenses;

**9.0 BUDGET ALLOCATION PER BENEFICIARIES**

*Please copy this table so that each partner has its own budget table. Repeat lines/columns as necessary.*

**9.1 PARTNER #1**

A) Personnel Costs ( <i>one row per resources, include name and role in the organization</i> )	gross cost per hour (EUR)	estimated hours	estimated total costs (EUR)
A1)	€		€
A2)	€		€
A3)	€		€
A) Total personnel costs = a1) + a2) + a3)			€
B) Subcontracting			estimated total costs (EUR)
b1) service..			€
b2) service..			€
B) Total subcontracting costs			€
C) Other costs	Numbers of Units	Description	estimated total costs (EUR)
c1) Consumables			€
c2) Equipment			€



# HOW TO APPLY: FOCUS ON PROVIDED ANNEXES

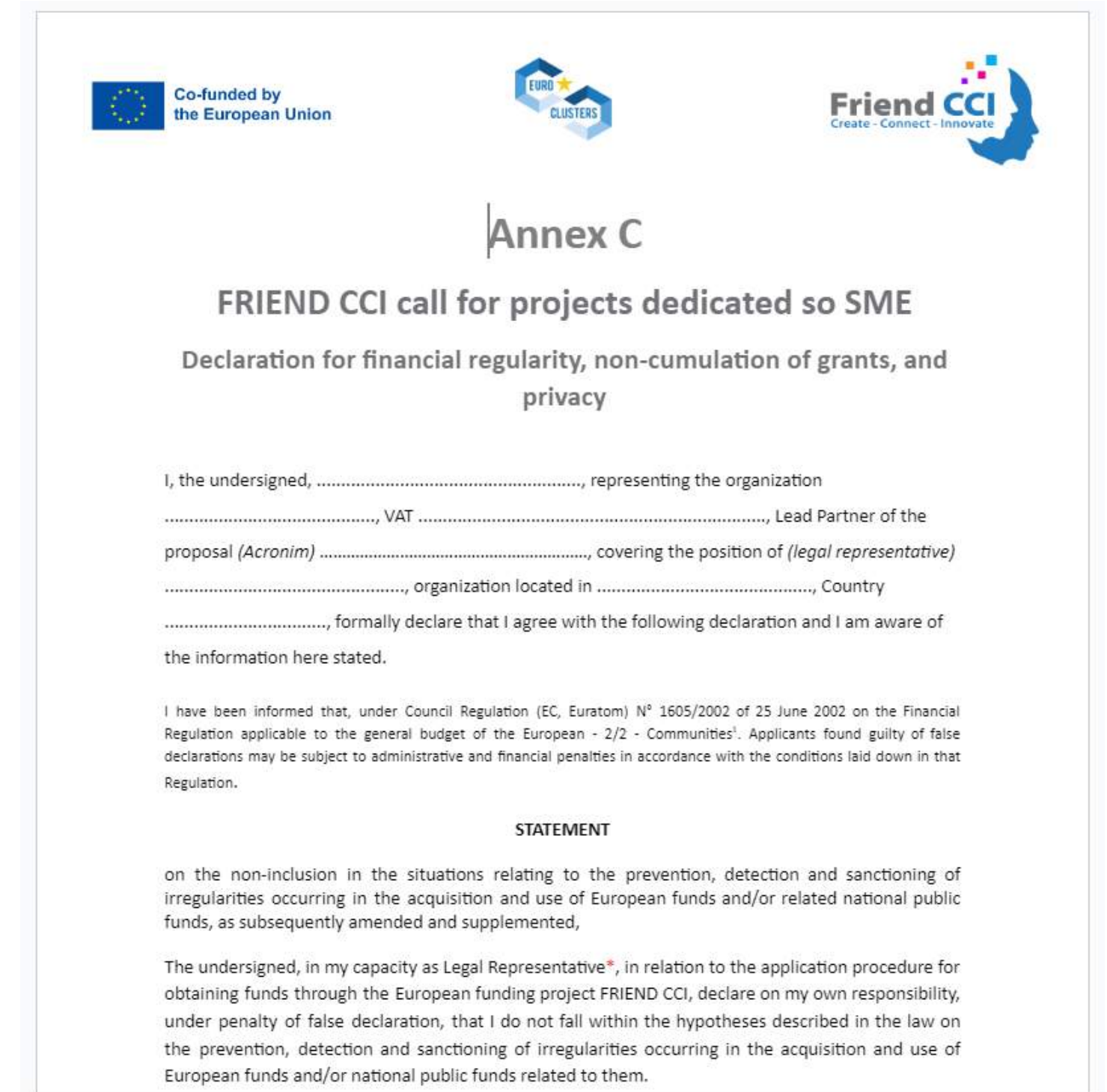
## 5. ANNEX C - PARTNERS DECLARATIONS



- Download it in word format;
- Fill it;
- Legal representative sign it;
- Transform it in PDF and submit it as annex;

### Annex C is composed of:

- Statement on financial regulation;
- GDPR compliance;
- Sensitive information;
- Declaration of non-cumulation of grants on same project



The image shows a document titled "Annex C" for the "FRIEND CCI call for projects dedicated to SME". The subtitle is "Declaration for financial regularity, non-cumulation of grants, and privacy". At the top, there are logos for the European Union (Co-funded by the European Union), EURO CLUSTERS, and Friend CCI. The form contains several lines of text for the undersigned to complete, including their name, VAT number, organization name, and location. It also includes a "STATEMENT" section where the undersigned declares their awareness of the financial regulations and their commitment to compliance. The text is as follows:

I, the undersigned, ....., representing the organization ....., VAT ....., Lead Partner of the proposal (*Acronym*) ....., covering the position of (*legal representative*) ....., organization located in ....., Country ....., formally declare that I agree with the following declaration and I am aware of the information here stated.

I have been informed that, under Council Regulation (EC, Euratom) N° 1605/2002 of 25 June 2002 on the Financial Regulation applicable to the general budget of the European - 2/2 - Communities<sup>1</sup>. Applicants found guilty of false declarations may be subject to administrative and financial penalties in accordance with the conditions laid down in that Regulation.

**STATEMENT**

on the non-inclusion in the situations relating to the prevention, detection and sanctioning of irregularities occurring in the acquisition and use of European funds and/or related national public funds, as subsequently amended and supplemented,

The undersigned, in my capacity as Legal Representative\*, in relation to the application procedure for obtaining funds through the European funding project FRIEND CCI, declare on my own responsibility, under penalty of false declaration, that I do not fall within the hypotheses described in the law on the prevention, detection and sanctioning of irregularities occurring in the acquisition and use of European funds and/or national public funds related to them.



## CONTACTS:

**General enquires:** [info@euroclusterfriendcci.eu](mailto:info@euroclusterfriendcci.eu)



**ITALIAN NATIONAL POINT - VENETIAN CLUSTER SRL**



**Project Coordinator:**

Mr. Sergio Calò  
[sergio.calo@venetiancluster.eu](mailto:sergio.calo@venetiancluster.eu)

**Tutor for applicants:**

Ms. Carlotta Campanini  
[carlotta.campanini@venetiancluster.eu](mailto:carlotta.campanini@venetiancluster.eu)



**FRENCH NATIONAL POINT - FRANCE CLUSTERS**



**Tutor for applicants:**

Ms. Lisa Besnard  
[lisa.besnard@franceclusters.fr](mailto:lisa.besnard@franceclusters.fr)



**GERMAN NATIONAL POINT - ITALCAM**



**Tutor for applicants:**

Ms. Lorena Melis  
[melis@italcam.de](mailto:melis@italcam.de)



**SPANISH NATIONAL POINT - IDIA CLUSTERS**



**Tutor for applicants:**

Mr. Alvaro Lombardo  
[alvaro.lombardo@idia.es](mailto:alvaro.lombardo@idia.es)



**ROMANIAN NATIONAL POINT - OPEN HUB**



**Tutor for applicants:**

Ms. Georgiana Mihailovici,  
[projectse@openhub.ro](mailto:projectse@openhub.ro)

